

CERTIFIED LAND CORNER RECORDATION

DESCRIPTION OF CORNER EVIDENCE FOUND, AND ORIGINAL RECORD (if known)

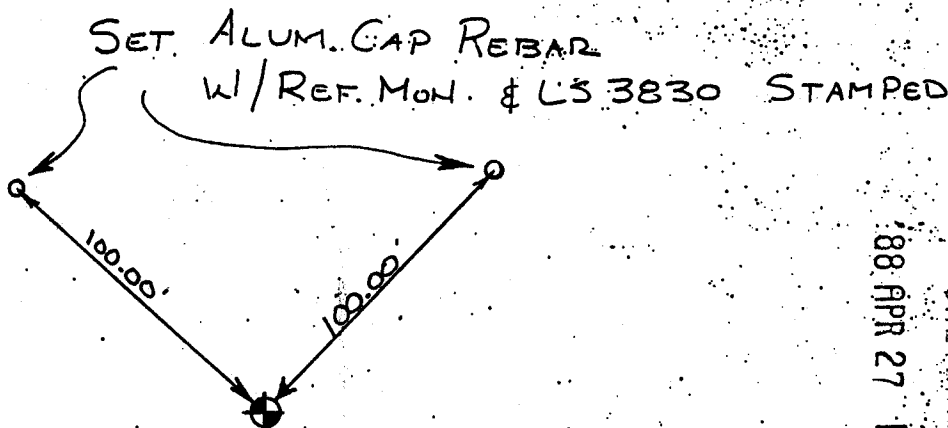
FOUND STONE WITH 1/4 CHISELED ON TOP

ORIGINAL RECORD CALLS FOR 14X10X6 GRANITE

DESCRIPTION OF MONUMENT AND ACCESSORIES ESTABLISHED TO PERPETUATE THE ORIGINAL LOCATION OF THIS CORNER:

FOUND STONE. SET 1/2" REBAR WITH ALUM. CAP STAMPED: REF. MON. LS 3830

SKETCH, WITH COURSE AND DISTANCE TO ADJACENT CORNER IF DETERMINED IN THIS SURVEY. (May Sketch or Paste Reproduction on Reverse Side.)



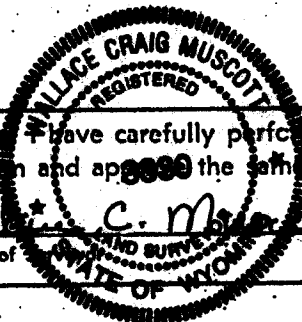
WEST 1/4 CORNER
SEC. 3 T. 17 NORTH
R. 67 WEST

043117
RECEIVED
FARMER COUNTY
CHEYENNE, WY.
88 APR 27 PM 12 24

I, WALLACE C. MUSCOTT certify that I have carefully performed or reviewed the work done on the diagrammed corner as reported on this recordation form and approved the same.

Wallace C. Muscott
Signature of

LS 3830
Registration No.



STATE OF WYOMING,
Office of Clerk and Recorder,
County of _____

This "corner record" was filed for record on the _____ day of _____, 19____, was noted on the cross-index plat and is assigned page No. _____, in book No. _____

James C. Whitehead
County Official

Cross Index No.	<u>C</u>	T. <u>17N</u>	R. <u>67W</u>	Mer. <u>60th</u>
		T. _____	R. _____	Mer. _____
		T. _____	R. _____	Mer. _____
		T. _____	R. _____	Mer. _____
		T. _____	R. _____	Mer. _____
		T. _____	R. _____	Mer. _____
		T. _____	R. _____	Mer. _____